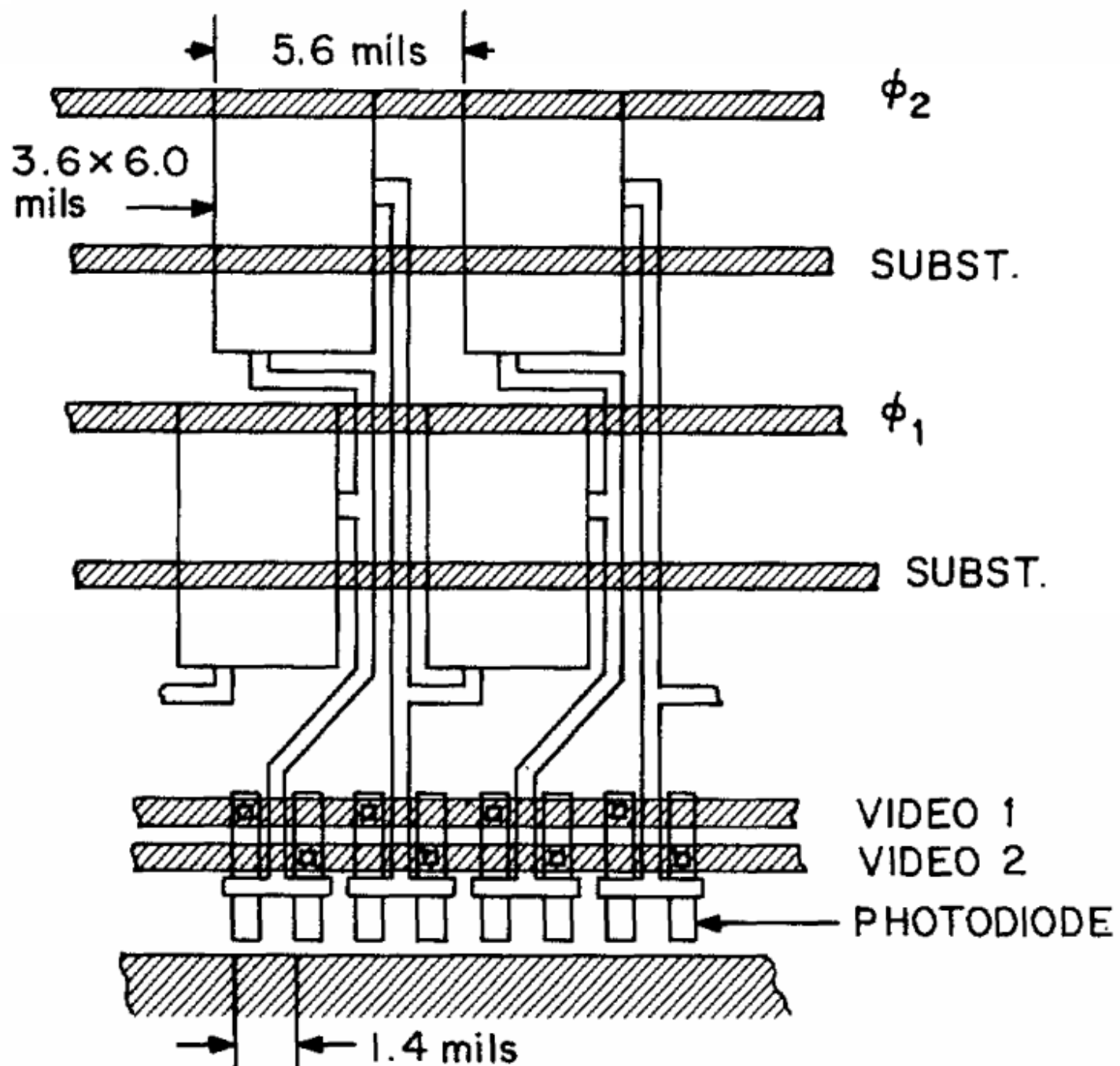


SELF-SCANNED PHOTODIODE ARRAY

ISSCC 1971



Design Possibilities for Photodiode Arrays with Integral Silicon-Gate Scan Generators

A ONE-DIMENSIONAL self-scanning photodiode array was described for the first time. Next to the photodiodes a MOS shift register is included, which controls the array scanning. Today's CMOS image sensors still rely on the same principle, that is one-dimensional and two-dimensional arrays of photodiodes are scanned by means of one and two digital shift registers respectively.

G.P. Weckler

R.H. Dyck

Fairchild Research and Development Laboratory, Palo Alto, CA